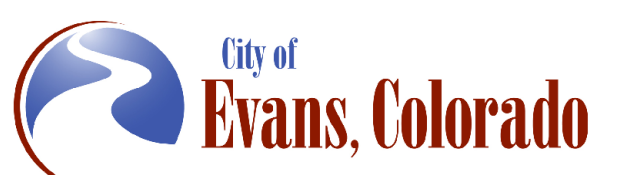
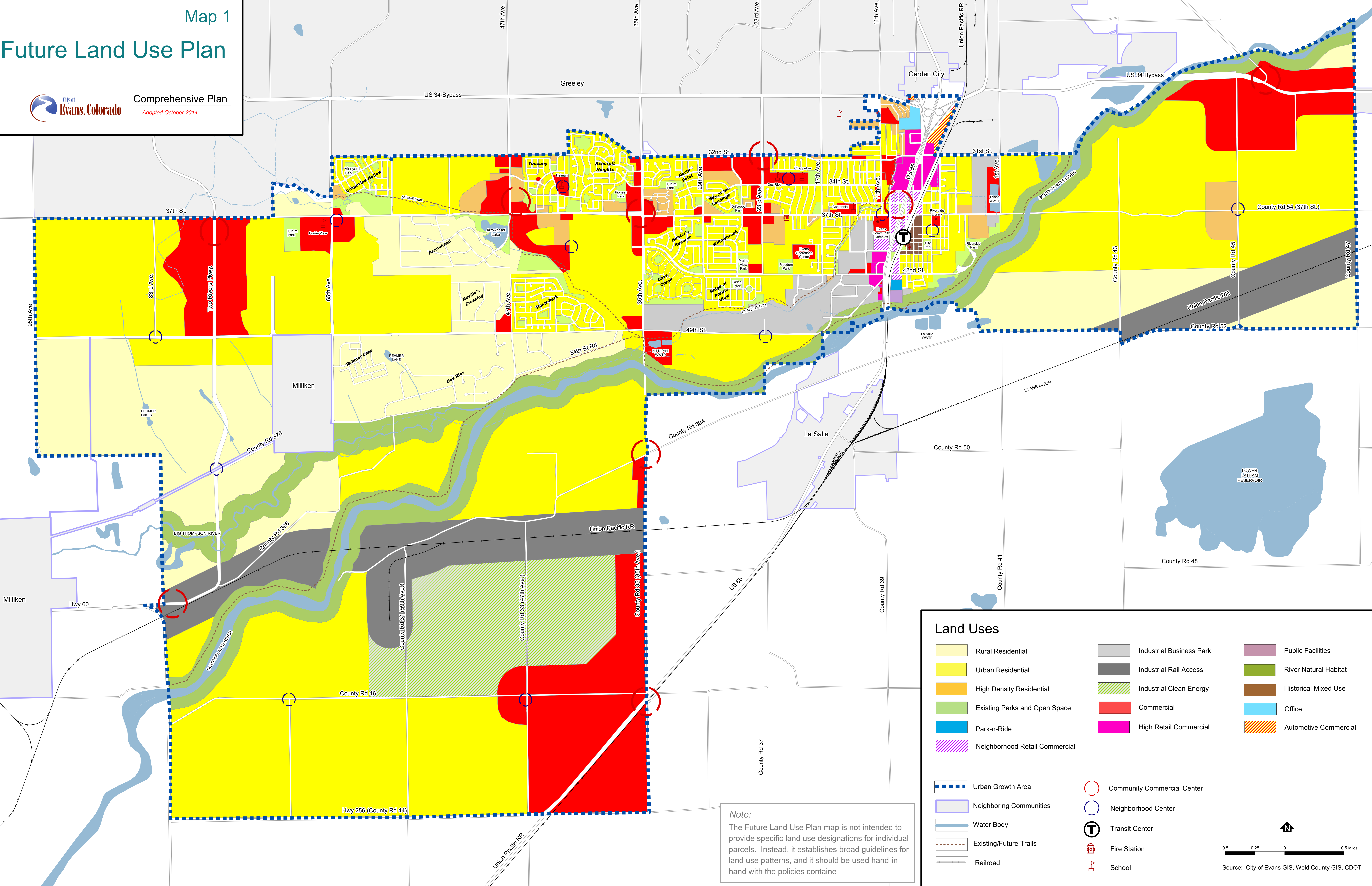


Future Land Use Plan



Comprehensive Plan
Adopted October 2014



Note:
The Future Land Use Plan map is not intended to provide specific land use designations for individual parcels. Instead, it establishes broad guidelines for land use patterns, and it should be used hand-in-hand with the policies contained

Land Uses

Rural Residential	Industrial Business Park	Public Facilities
Urban Residential	Industrial Rail Access	River Natural Habitat
High Density Residential	Industrial Clean Energy	Historical Mixed Use
Existing Parks and Open Space	Commercial	Office
Park-n-Ride	High Retail Commercial	Automotive Commercial
Neighborhood Retail Commercial		

Urban Growth Area	Community Commercial Center
Neighboring Communities	Neighborhood Center
Water Body	Transit Center
Existing/Future Trails	Fire Station
Railroad	School

0.5 0.25 0 0.5 Miles

Source: City of Evans GIS, Weld County GIS, CDOT