



June 2025

New Ridge Park playground officially opened!

We were so happy to see so many of our neighbors come by as we officially opened the new Ridge Park playground on May 22. Our friends from Vero Fiber provided free frozen snacks as the new playground was officially dedicated.

This brand new, one-of-a-kind playground, located at 2426 Bluebells Drive, was made possible thanks in part to a very generous donation from Chevron Energy.



In May, Evans CST Rachel Volz met with The Exchange Club of Greeley. She talked about all the wonderful things going on in Evans. In return, they donated 50 child emergency care bags for our Officers to hand out on calls.



After completing concrete replacement work on the sidewalks, ADA ramps, pans, and curb & gutter in May, crews began the mill & overlay work to upgrade 23rd Avenue. This work is part of the 2025 Major Roads Projects that has already seen 17th Avenue remade and will soon see full-depth reconstruction of 42nd Street/Prairie View Drive. These projects are funded by The Road Ahead 1% sales tax approved by Evans voters in 2020. The Evans City Council wanted to use the funding provided by the tax to tackle work along our city's most heavily-trafficked thoroughfares in our primary commercial corridors.



Thank you to Starbucks on 23rd Ave for hosting the Coffee With a Cop Event on May 24.





June 2025

City Council Update – May 2025

In their two meetings in the month of May, the Evans City Council approved contracts for three major capital improvement projects that will provide significant benefits to the public. The Councilmembers also accepted the results of the 2024 financial audit, for which the City's finance department received glowing reviews for their meticulous attention to detail, sound financial policies, and stellar stewardship of taxpayer resources. Proclamations recognizing police, public works, city clerks, and mental health were signed by Mayor Mark Clark and the City of Evans Neighborhood Services Division was proud to recognize the May Yard of the Month winner.



(clockwise from top left) Evans Police Officers, City Clerk Julie Barnett (right) and Deputy Clerk Meghan Paisley, Micaela Sanchez with North Range Behavioral Health, and Public Works Director Ty Bereskie (left) and Operations Superintendent Daniel Kiefer accepted proclamations from Mayor Mark Clark.



The Evans Neighborhood Services Division was proud to honor Gary Crawford and Tina & Lindsay Maxwell with the May Yard of the Month Award. This honor is given monthly to the home chosen to have the most beautifully landscaped and maintained yard. The recipients are recognized by the City Council and given a \$50 gift card and yard sign.

In another demonstration of the Evans City Councils' commitment to improving public infrastructure and making the best use of taxpayer dollars, three new, major infrastructure projects were approved at the May 6 City Council meeting.

By unanimous vote, the Evans City Council approved contracts with GLH Construction for Phase 2B of the 37th Street Widening project, with Lumen8 Transportation Technologies for the installation of a traffic signal on the busy 23rd Ave. / 34th St. intersection, and with Colorado Civil Infrastructure for the installation of a new sanitary sewer main that runs beneath State Street between 31st and 37th Streets.

This next phase of the 37th Street Widening Project will see Evans' primary east-west corridor upgraded to a four-lane arterial roadway with landscaped center median, matching the work done (**continued on page 3**)

Sign up for FREE City news email alerts!

To subscribe to the Evans Express and receive the City's monthly newsletter for FREE in your inbox, scan the QR code to the right. Additionally, you can sign up to receive email alerts about any City topics - Council meetings, recreation news, public works project updates and more - that you are interested in.





June 2025

City Council Update – May 2025

(from page 3) from 47th Avenue east to Stampede Drive, and this year continuing from Stampede Drive to 35th Avenue. Work began on May 12 and the roadway will remain fully closed to thru traffic for the next three-plus months to expedite progress and ensure the safety of the work crews. The City is asking motorists who choose to detour through neighborhoods north of 37th Street to exercise extreme caution while traveling through the residential subdivisions due to the large number of pedestrians, particularly school-aged children, in the area.

The City of Evans has emphasized to GLH Construction the importance of having at least two lanes open by mid-August in time for the beginning of the 2025-26 school year. This project, which is funded in part by the 1%



road tax approved by Evans voters in 2020, had an initial budget of \$5,710,000 yet, thanks to diligent work by the City and GLH Construction, the not-to-exceed contract amount approved by the Councilmembers totaled \$3,971,724.90. This below-budget figure of \$1,738,275.10 again demonstrates the City of Evans commitment to fiscal responsibility and strong stewardship of taxpayer dollars.

The traffic signal at 23rd Ave. / 34th St. has been a priority for the Evans City Council as the area is near Chappelow Arts Magnet and Dos Rios Elementary schools as well as in the area of a busy and growing commercial corridor. Work on the installation of this traffic signal, which will include four traffic signals as well as four pedestrian poles, will begin soon. Public safety is a top priority for the Evans City Council and the installation of this traffic signal will go a long way towards achieving that goal in one of the busiest sections of the City.

Street Widening Phase 2B Project Map

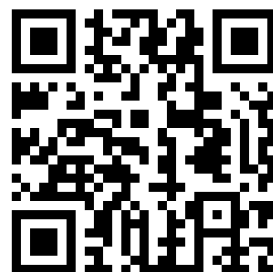
2B involves widening 37th Street from two lanes to four lanes, beginning near 3720 37th Street (just east of Stampede Drive) and continuing east to 35th Ave. The project also includes associated utility infrastructure improvements. It is the third phase in the overall construction sequence.



The Council's approval of the State Street Sanitary Sewer project again demonstrates a strong commitment to fiscal responsibility and infrastructure improvement and rehabilitation. The project, which will upgrade the sanitary sewer line from the current 8" main to a 12" main to handle current and future volume requirements and will also realign the main so work on the East Side Storm Sewer project can be completed as designed. The City initially budgeted \$2,000,000 for this project yet, thanks to diligent work by the City under new procurement policies, the not-to-exceed amount approved for the project came in at \$1,167,430.00, a savings of \$832,570 for the City.

Sign up for FREE City news email alerts!

To subscribe to the Evans Express and receive the City's monthly newsletter for FREE in your inbox, scan the QR code to the right. Additionally, you can sign up to receive email alerts about any City topics – Council meetings, recreation news, public works project updates and more – that you are interested in.





June 2025

Highlights from Mayor Mark Clark's Town Hall Meeting on proposed mill levy adjustment.

Evans Mayor Mark Clark hosted a town hall meeting to discuss the placing a mill levy adjustment on the November ballot for voter consideration. Mayor Clark has expressed his gratitude for the large turnout and the informed questions posed by residents.

Mayor Clark was quick to point out that he is not one who generally finds himself in favor of proposing or supporting a tax increase, yet he outlined that he and the members of the Evans City Council have a civic responsibility to do the very best for the City. On this, the mayor said, the numbers are clear.



Evans relies overwhelmingly on sales taxes – 59% of revenue in the 2025 budget is derived from this source – for general fund revenue. This heavy reliance puts the City at great risk, Mayor Clark explained, as any disruption in the economy will almost immediately cause a significant drop in tax revenue and, therefore, painful cuts to critical city services.

In recent years, the City has had to play catch-up on some deferred maintenance that has caused problems with parts of the storm drainage infrastructure as well as problems with the roadways. Mayor Clark said that additional revenue will allow the City to get ahead of concerns before they become problems – better to spend less now to prevent problems with long-term fixes than to have to spend much more down the road when infrastructure failures occur.

At the town hall meeting, Mayor Clark remarked that there is never a good time to ask property owners to consider a tax increase. Yet, speaking on the responsibility that he and the rest of the City Council have to do the best for the city, now is the time to act. The City is projected to begin running budget deficits as early as 2028, even without an economic downturn.

In order to mitigate the impact on taxpayers, the City is proposing a phased-in adjustment of the mill levy rate over a three-year period. The proposal calls for a 2.5 mill increase per year for three years. Initially, the City Council was considering asking for an increase in the mill levy by 11.964 mills to the same rate (15.500 mills) as the Evans Fire Protection District, however, after soliciting community feedback, it was decided a lower increase (7.500 mills) and phasing the increase in would be a better option for members of the community.

Mayor Clark is planning to hold additional town hall meetings to discuss this topic with residents. Stay tuned to the City of Evans website and social media channels for details.



Proposed Mill Levy Adjustment Information

What is being proposed?

The City of Evans is proposing a phased-in adjustment to the City's mill levy from the current 3.536 mills to 11.036 mills over a three-year period.

- **Current:** 3.536 mills
 - **Year 1:** 6.036 mills
 - **Year 2:** 8.536 mills
 - **Year 3:** 11.036 mills
- At 11.036 mills, Evans property taxes would remain below Greeley, Windsor, Johnstown, other neighboring communities, and the Weld County average of 15.117 mills



**Making Evans the
Community of Choice in
Northern Colorado**



Enhanced Public Safety

- Invest in police staffing, officer training, and equipment modernization to meet the demands of a growing population.
- Improve emergency response capabilities to ensure you and your family are always protected; and
- Strengthen community policing initiatives to build critical partnerships with the public.



Infrastructure Maintenance and Rehabilitation

- Provide long-term funding for rehabilitation and preventative maintenance of critical public infrastructure to support community livability and economic development.
- It is essential to note that the proposed mill levy adjustment **DOES NOT** replace the 1% street sales tax for road rehabilitation & maintenance.



Parks & Recreation Upgrades

- Invest in the development of new amenities and maintenance of existing park facilities.
- Expand recreation programming across all age groups to provide emerging and in-demand recreation services.
- Implement goals and development standards to improve access between parks and neighborhoods.

What's the cost to you?

For a home of median value in Evans (\$372,000), an annual increase of less than \$63 will result if this proposed adjustment is approved.

Annual Property Tax paid to the City of Evans:

2025: \$88.99

2026: \$151.90

2027: \$214.82

2028: \$277.73

By year 3, the total additional cost would be **\$277.73** per year, or **\$24.13** per month.

Investing in our Future - Together!

The Evans City Council is exploring a potential mill levy adjustment to raise the City's mill levy from 3.536 mills to 11.036 mills to stabilize revenue sources and ensure the City of Evans can continue to provide the Evans community with high-quality and essential municipal services. Whereas taxes generate 73% of General Fund revenues, a mere 5% of tax revenue is generated by property taxes. In comparison, 59% is generated by retail sales tax, a more economically sensitive revenue source.

Scan to learn more





June 2025

Business Spotlight - The Human Bean

Started with one drive-thru stand and a small menu, The Human Bean has grown into a beloved community fixture with 10 drive-thru locations and a strong reputation for their commitment to high-quality drinks, local partnerships, and a dedication to giving back to the communities they serve. We are lucky to have The Human Bean right here in Evans!

Dedication to Quality and Inclusivity

The Human Bean strives to offer superior products and ingredients by sourcing from the best coffee farms around the globe and from local partners whenever possible. Over the last two decades, The Human Bean's menu has grown to offer a variety of breakfast food items such as burritos and sammies, baked goods, cake pops, and more. Their menu aims to please all dietary needs with vegan, gluten-free and dairy-free options that do not compromise flavor.



Giving Back to the Community

With the support of their loyal customer base, The Human Bean's monthly Guest Barista Days, Thankful Thursdays, donation drives, and other give-back efforts, they have raised funds and collected items to improve the lives of those in need in our area. Their annual, always highly anticipated Coffee for a Cure event has raised nearly \$690,000 to date for local cancer fighters!



The Human Bean has created a place that's not just about the drinks but about fostering connections and community spirit.

Visit The Human Bean at 3310 23rd Avenue in Evans. Follow the Human Bean of Northern Colorado to get updates on promotions and events.





June 2025



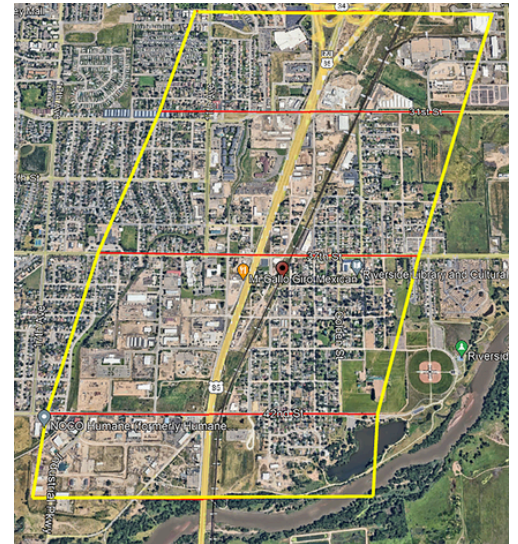
REIMAGINE 85

Evans Property Initiative

INTRODUCING THE EVANS PROPERTY INITIATIVE: TRANSFORMING THE HIGHWAY 85 CORRIDOR

The City of Evans is thrilled to launch the Evans Property Initiative, an exciting effort to revitalize the U.S. Highway 85 Corridor through environmental assessment, planning support, and economic development. Thanks to a \$500,000 Community-wide Assessment Grant from the Environmental Protection Agency (EPA), this initiative provides commercial and industrial property owners with the resources they need to unlock new opportunities for growth and investment.

At the heart of the program is the revitalization of brownfields—properties where real or perceived environmental challenges are hindering redevelopment. Through FREE environmental site assessments (ESAs) and customized planning support, the Evans Property Initiative empowers commercial and industrial property owners to turn underutilized sites into thriving community assets.



Brownfields boundary map



Work underway on HWY 85/13th St.

Scan the QR Code
below to learn more!



GET INVOLVED

If you own a commercial and industrial property along or near Highway 85, now is the time to take advantage of free resources that can enhance your property's value and marketability. Visit www.reimagine85.org to learn more about the initiative and discover how you can benefit.

Together, we can reimagine Highway 85 as a hub for innovation, growth, and environmental stewardship.

PROGRAM GOALS AND PROGRESS

The initiative is designed to:

- Create a Property Inventory – Mapping sites along Highway 85 to identify redevelopment opportunities.
- Engage the Community – Collaborating with property owners, businesses, and residents to understand needs and future aspirations.
- Provide Free Support – Offering ESAs, site planning, and targeted cleanup strategies to facilitate redevelopment.
- Promote Smart Growth – Aligning with land use updates to encourage revitalization within the Highway 85 overlay district.

To date, the initiative has successfully assessed key properties, fostered stakeholder collaboration, and supported efforts to repurpose underutilized sites—all of which contribute to increased property values and a more vibrant, sustainable community.

Thefts From Vehicles Increasing



The **Evans Police Department** has seen a noticeable uptick in thefts from parked cars recently. In some of the cases, the vehicles were locked, and the thieves broke into the car to remove personal items. In the majority of cases, however, the vehicles were left unlocked, allowing the thieves to simply help themselves to whatever items of value they could find in the vehicles. The most frequent types of personal items stolen include wallets, purses, car stereos, driver's licenses, insurance and registration documents, laptop computers, cell phones, license plates and garage door opener remotes which can later be used to access the home. Not only is

the theft of personal items difficult for the victim, but many of these stolen items can be used in the commission of other, often times more serious, crimes including credit card fraud and identity theft, to name a few.

Criminal vehicle trespass, more commonly called car break-ins, usually occur in clusters within neighborhoods. Thieves will target a specific neighborhood one night and the next night or a few nights later, move on and hit other neighborhoods. The result is that cars parked anywhere throughout the City can become targets for theft. While this type of crime is disturbing and the Evans PD is doing all they can to prevent thefts, the good news is there are a lot of easy, common sense actions residents and their visitors can take to reduce the chances of becoming a victim.



The Evans Police Department is encouraging residents to:

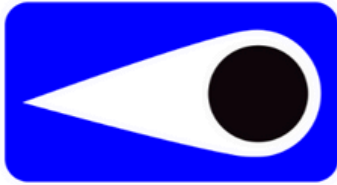
- **Lock your car doors and seal your windows.** As simple as it sounds, you would be surprised how many thefts occur from vehicles left unlocked or with the windows open overnight.
- **Use all the safety features with which your vehicle is equipped.** Make sure to activate your alarm and investigate quickly if you hear your car alarm go off while you are away from it.
- **Do not leave anything of value in your car.** Leaving your purse or wallet, cell phone or laptop, your golf clubs or gym bag in plain view makes it an easy target for thieves. Even a zipped-up gym bag or backpack can be tempting for a thief as they cannot be sure if the bag contains dirty exercise clothes or something far more valuable like your bankbook, membership cards, small entertainment devices or expensive tools.
- **Park in a well-lit, secure area visible to others.** Thieves prefer to break into vehicles parked in dark and secluded areas and avoid well-lit areas as much as possible.
- **Form a neighborhood watch group.** Banding together with your neighbors helps provide cover for when you, or your neighbors, are away. See page 6 for more.
- **Report the Crime.** If you do find yourself a victim, report the crime immediately to the Evans PD.





Neighborhood Watch

**NEIGHBORHOOD
WATCH**



PROGRAM IN FORCE

**ALL SUSPICIOUS
PERSONS & ACTIVITIES
ARE IMMEDIATELY
REPORTED TO
LAW ENFORCEMENT**

Neighborhood Watch is a program where community members, in cooperation with the Evans Police Department, participate in the detection and deterrence of crime in their neighborhoods.

The Neighborhood Watch Program facilitates communication between you and your neighbors. Additionally, it develops a partnership between our City police force and citizens to help enhance the safety and security of our neighborhoods.



As citizens of the Evans community, we share the common goal of enhancing the quality of life within all of our neighborhoods



Keeping you and your family as safe as possible is a continued goal of the Evans Police Department.

Our success in reaching this goal depends greatly on your efforts as well.

If you would like to organize a Neighborhood Watch Program, please reach out to Teresa McClatchey at 970-590-1504 or tmclatchey@evanscolorado.gov



Evans Police Department



Tree Assistance Program



*Be rewarded for thinking green! Apply for up to **\$275** towards the approved purchase of a tree.*



GUIDELINES

Applications are open online
April 1 - September 15*



<https://www.evanscolorado.gov/living-here/neighborhood-services/tree-assistance-program/>

*funding is limited and administered on a first come first serve basis

- Live within the City of Evans
- Submit an application and reimbursement request form **BEFORE** buying your tree
- Call 811 for utility locates
- Plant an approved tree species and size
- Plant tree in accordance with the Evans Municipal Code
- Receive your reimbursement
- Maintain and care for your tree properly

See the Tree Assistance Program info sheet and application for all requirements.

Questions? – Contact our Neighborhood Services team at 970-475-1166





Summer Lawn Watering Tips

LAWN WATERING MINUTES PER ZONE				
MONTH	FIXED SPRAY HEAD	MANUAL SPRINKLER	ROTOR HEAD	HIGH EFFICIENCY
JANUARY-APRIL	WATER TREES AND SHRUBS AS NEEDED			
MAY	17	23	29	35
JUNE	22	31	40	48
JULY	23	32	41	50
AUGUST	19	25	32	39
SEPTEMBER	16	22	28	33
OCTOBER-DECEMBER	WATER TREES AND SHRUBS AS NEEDED			

Source: <https://www.denverwater.org/residential/efficiency-tip/watering-your-lawn>

The numbers above are based on watering 3 times per week. With all sprinkler types cycle and soak can help increase efficiency and reduce runoff. Run 2-3 cycles 45-60 minutes apart. The total run time for the day should equal the number recommended in the table above.

*Please note that these are recommended run times for our region, if your lawn is suffering at these recommended run times please adjust time and cycles accordingly. Alternatively, if you water less than this and your lawn is healthy, do not water more than needed.

The City of Evans has Outdoor Watering Policies effective between April 15 and October 15.

Outdoor watering is allowed on scheduled days except between the hours of noon and 5pm.

- Single-family homes with even-numbered addresses shall only water lawns on Sunday, Tuesday, and Thursday of each week.
- Single-family homes with odd-numbered addresses shall only water lawns on Monday, Wednesday, and Saturday of each week.
- Multi-family residents or apartments shall only water lawns on Sunday, Tuesday, and Friday of each week.

Watering mid-day leads to loss of water through evaporation from the sun.

\$25 OFF
YOUR WATERWISE
GARDEN KIT*

Garden In A Box

Low-watering gardening made easy.

** Limited number of discounts available in participating water districts and municipalities.*



SAVE WATER EASILY

Low-water plants help you save about 7,000 gallons of water over the garden's lifetime compared to a traditional lawn.



NO GREEN THUMB REQUIRED

Use the plant-by-number maps and Plant & Care Guide for a low-water garden that's as simple as it is beautiful.



INSTANT CURB APPEAL

Using starter plants instead of seeds, Garden In A Box is a quick way to add a pop of color to your yard.



PRO DESIGN WITHOUT THE COST

Professionally designed for Colorado yards and starting at just \$127, Garden In A Box kits are beautiful AND affordable.



ATTRACT THE "LOCALS"

Your colorful gardens will attract pollinators, helping spread the love throughout your neighborhood!

ORDER STARTING June 18
for August and September pickup.





**FREE
SPRINKLER
EVALUATION!**

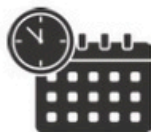
*Limited number
available*

**Slow
the
Flow**
Optimize your water use

Maintain your landscape while watering smarter
with a FREE sprinkler evaluation!



**REDUCE YOUR
WATER WASTE**



**GET A CUSTOM
WATERING SCHEDULE**



**LEARN ABOUT YOUR
SPRINKLER SYSTEM**

Sign up for your sprinkler evaluation today!

Visit ResourceCentral.org/sprinklers or call 303-999-3824



Scan
here to
sign up!



Lawn Replacement

Upgrade to a waterwise yard!

**Discounts
Available
Up To \$750**
**On a first-come,
first-served basis.
This is not a
rebate.*



The 2025 season has begun-Apply now!

Removals will begin late April - early May weather dependant. Apply today!

ResourceCentral.org/lawn | LawnReplacement@ResourceCentral.org | 303-999-3820 x 221





SUMMER DAY CAMP

MAY 27 - AUGUST 8

***NO CAMP 6/30-7/4**

MONDAY - FRIDAY

7:30AM - 5:30PM

5-12 YEARS OLD

WEEKLY \$275

SESSION 1 (JUNE 2 - JUNE 27) \$900

SESSION 2 (JULY 7 - AUGUST 1) \$900

FULL SUMMER (10 WEEKS) \$2000

REGISTRATION OPENS

MONDAY, MARCH 17

**SCAN THE QR CODE
TO REGISTER!**



REC.EVANSCOLORADO.GOV
970-475-1125

RECREATION@EVANSCOLORADO.GOV
1100 37TH ST. EVANS, CO 80620



TOTAL BODY BLAST

**FRIDAYS
11-11:45AM**

A circuit style weight lifting class that utilizes free weights to improve whole body mobility, stability, strength and endurance. Each week will highlight a different category to break down these functional concepts.

\$48 | 8 WEEK SESSION

Registration: March 17 - April 20

Session: May 2 - June 20

DROP-IN:

\$7 PER CLASS

DROP-IN ADMISSIONS ARE ONLY AVAILABLE FOR CLASSES THAT MEET THE MINIMUM NUMBER OF REGISTERED PARTICIPANTS.

SCAN THE QR CODE
TO REGISTER ONLINE!



1100 37TH ST, EVANS, 80620 | 970-475-1125
RECREATION@EVANSCOLORADO.GOV | REC.EVANSCOLORADO.GOV

1100 37th St, Evans, 80620 | 970-475-1125 | recreation@evanscolorado.gov | rec.evanscolorado.gov

Scan the
QR Code to
register online!



ZUMBA

**Thursdays
6-7 pm**

Session 3:

May 1 – June 19

Registration:

\$48 per session

March 17 – April 20

**Minimum 4 registered participants
per class**

Drop-in:

\$7 per class

**Drop-in admissions are only
available for classes that meet the
minimum number of registered
participants.**

Call the Recreation Front Desk at 970-475-1125 for more information.



Summer Reading Adventure 2025

COLOR OUR WORLD™

May 19-August 8
All Ages

Riverside Library & Cultural Center
3700 Golden St, Evans

highplains Library District
www.mylibrary.us/sra
1.888.861.READ(7323)

Facebook Instagram YouTube

Pizza Hut

The Human Bean

HPLD Friends & Foundation

collaborative summer library program™

2025 Artwork by Michael Mullan

JUNE FAMILY EVENTS

Wednesday, June 5, 3:00-4:00pm — Fairy House workshop: Families are invited to build their very own fairy house. Families will work together using natural materials to build an adorable tiny home fit for a fairy. All materials provided - just bring your imagination!

Thursday, June 19, 3:00-4:00pm — In Rhythm with Armando Silva: Join artist and dancer Armando Silva as he leads a hip hop-based dance class that uses the body as the instrument and space as the canvas to tell stories. The class is open to dancers of all levels and ages. Learn to tell a story with dance!

Wednesday, June 25, 6:00-8:00pm — Family Movie: The Wild Robot: Let's have a community watch party of The Wild Robot. Bring your favorite blanket, snacks, and friends. We'll provide the popcorn.

PRESCHOOL

Monday, June 9, 2:00-3:00pm — Foam Painting: Join us for some fun Foam Painting at the library! We'll read some art themed picture books and then make some cool textured art with homemade foam paint.

ELEMENTARY SCHOOL

Monday, June 30, 4:00-5:00pm — Gotta Color 'Em All: Pokémon Party: Get ready to explore the vibrant world of Pokémon in this colorful summer party! Celebrate your love of Pokémon through exciting crafts (Poké ball, Create Own Pokémon Cards), games (Bingo, Catch the Trainer Toss, and Trivia), and activities (Guess the Pokémon icebreaker, passive scavenger hunt).

MIDDLE SCHOOL AND HIGH SCHOOL

Tuesday, June 10, 3:00-4:30pm — History of Barnum and Bailey Circus: Presented by Weld County Paranormal: Did you know the circus has been a part of Weld County since Nathan Meeker made his way here? Come on a journey through history as we talk about the circus's support of the area and create a few items that circus goers would have made in the 1900s.

JULY FAMILY EVENTS

What's new at Riverside Library in June 2025?

ADULTS & TEENS

DROP IN TECHNOLOGY & CAREER HELP @ RIVERSIDE LIBRARY

Need help navigating technology or with job applications? We are here to help! Drop on by to the Riverside Library and Cultural Center on the 1st and 3rd Tuesdays of the month. No appointments needed!

Senior Social Circle

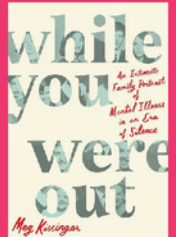


The perfect place to meet new friends & participate in a variety of rotating activities designed just for you!

Mondays at 11:30 am

Riverside Readers

An in-person and virtual book club that discusses general interest books.



Monday, June 23 at 6:30 pm

Relax & Craft

Crafts for adults! In May we are making crochet granny squares. Register online or at the front desk!



Monday, June 16 5:30 pm

TEENS!

We have lots of fun SRA events just for you! Programs include karaoke, an escape room, a presentation by Weld County Paranormal, and lots of art opportunities.

Pokémon Club



Join a Pokémon Professor & play the Pokémon Trading Card Game. Recommended for kids 10 and up.

MONDAY, JUNE 16TH, 4-5 PM

CHILDREN & FAMILIES

Storytime

Mondays 9:30 a.m. Tales for Tots Ages 2-4

Tuesdays 9:30 a.m. Twinkle Babies Ages 0-2

Wednesdays 9:30 a.m. espanol! All ages

2:00 p.m. Playdate Cafe Baby/Toddler

Thursdays 9:30 a.m. Family Storytime All ages



2025 SUMMER READING!



Our annual summer reading program is here! Please grab one of our SRA flyers for a full list of programs!

Wildly Fun Wednesdays

Join us each Wednesday afternoon at 4:00 pm for fun rotating activities!

LEVEL UP! June 4 **NEW!** Come try out some video games!

Lego Club June 11

Crafternoon June 18

Board Game Club June 25



Que hay de nuevo biblioteca de Riverside junio del 2025?

ADULTOS Y ADOLESCENTES

TECNOLOGÍA Y AYUDA PROFESIONAL EN LA BIBLIOTECA RIVERSIDE

¿Necesitas ayuda con la tecnología o con tus solicitudes de empleo? ¡Estamos aquí para ayudarte! Visita la Biblioteca y Centro Cultural Riverside el primer y tercer martes de cada mes. ¡No necesitas cita!

Senior Social Circle

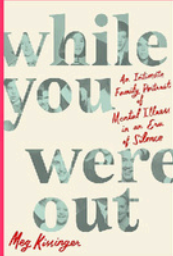


El lugar perfecto de conocer nuevos amigos y participar en actividades variadas diseñadas solo para usted

Cada lunes a las 11:30 am

Riverside Readers

Un club de lectura en persona y virtual que discute libros de interés general realizados en inglés.



Lunes, Junio 23 at 6:30 pm

Relax & Craft

¡Artesanía para adultos! En mayo haremos cuadrados de ganchillo (croché). ¡Inscríbanse en línea o en el escritorio de la recepción!



Lunes, Junio 16 5:30 pm

ADOLESCENTES

¡Tenemos muchos eventos divertidos de SRA solo para ustedes! Los programas incluyen karaoke, una sala de escape, una presentación de Weld County Paranormal y muchas oportunidades artísticas.

Pokémon Club



Únete a un profesor de Pokemon y juega con las cartas de pokemon.



Recomendado para los niños de 10 años en adelante.

LUNES, JUNIO 16TH, 4-5 PM

NIÑOS Y FAMILIAS

Cuenta Cuentos

lunes 9:30 a.m.	Tales for Tots	edades 1.5-3
martes 9:30 a.m.	Twinkle Babies	edades 0-1.5
miércoles 9:30 a.m.	español! Playdate Cafe	todas las edades bebes/ Preescolar
jueves 9:30 a.m.	Familia Storytime	todas las edades



¡VERANO DE LECTURA AVENTURERA 2025!



¡Nuestro programa anual de la lectura del verano ya empieza! ¡Consigan uno de nuestros folletos de SRA para ver la lista completa de programas!

Miercoles de Diversión

Ven todos los miércoles en la tarde a las 4 para una rotación de actividades

LEVEL UP!

Junio 4



Prueba nuevos Video Juegos

Club de Legos

Junio 11

Crafternoon

Junio 18

Club de juegos de mesa

Junio 25



Outdoor Street Lighting

How to report a Street Light Outage



What you will need to report a street light outage

The Pole number where the light is located—the pole number will be on the street side of the pole and will either have two numbers over two, or three over three.

For Example



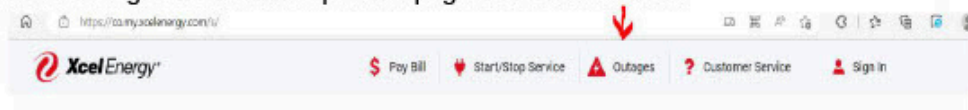
Xcel Energy relies on the information you provide so please be as specific as possible. If the pole does not have a number, then please provide the address behind the pole, or a description of where the pole is located.

For example: The light is located on the Southwest corner of E. 16th Ave and Pennsylvania.

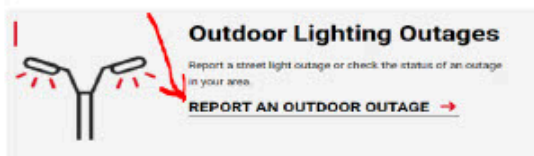
Where to report a Street light Outage?

Go to <https://co.my.xcelenergy.com/s/>

FIRST: Select the Outages icon at the top of the page as indicated below



NEXT: Scroll to the bottom of the page and look for **Outdoor lighting Outages** and click on **REPORT AN OUTDOOR OUTAGE** as seen below



Next: Click on **Report it now** →

Finally: Enter your information.

1. Your name
2. Your email address: This is used to inform you when the light is repaired.
3. Contact phone number: This will be used to contact you should we have any questions regarding your repair request.

Pole information: ****If an outdoor lighting pole is broken, please call Xcel Energy Customer Care at 1-800-895-4999.

1. Select the problem with the light
2. Pole number: This is where you would enter the two over two or three over three numbers on the pole.
3. Light location: This is the Address where the light is located. Please provide as much specific information as you can.
4. Comments: Provide any additional information that you believe would be helpful

Lastly: You may Add more outages if there are more than one or hit the submit button.

Once you submit the request you will be provided a confirmation number. Keep this number to refer back to if needed.

*****Please note:** Repairs are made in 5 business days unless there is more than routine maintenance is required.



Need assistance?

Call 1-800-895-4999

For 24-hour Customer Service